



**South Canyon**  
Lutheran Church

The **Canyon**

700 44th Street  
Rapid City, SD 57702  
605-343-4887

Office Hours:  
Mon-Thurs: 9:00am- 4:00 pm  
Fridays: 9:00 am-12:00 pm  
info@sclc-rc.org

# Parish News

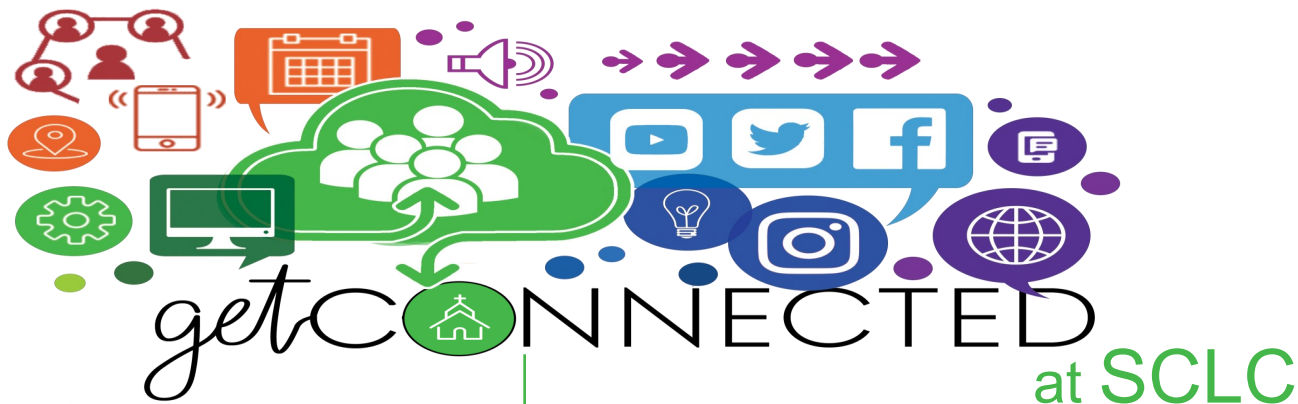
# January

# 2023



## In This Issue

- Stay Connected-2
- Pastor Chris' Page-3
- Pastor Erik's Page-4
- Faith Formation-5
- Moments to Celebrate-6, 7, 8
- What's Happening-9, 10
- Church Business & Financials-11
- Pastoral Care-12
- Social & Outreach Ministry-13
- From the Office-14
- Music and Worship-15
- Children, Youth, & Family-16
- Calendar-17



## Service Times

- Wednesdays at 6 pm
- Saturdays at 5:30 pm
- Sundays at 9:00 am
- Communion is offered on the 2nd, 4th & 5th weekends

## Wednesday Nights

- 4:45 pm - Meal
- 6:00 pm - Worship
- 6:45 pm - Small Groups/Faith Formation
- 7:10 pm - Adult Choir Rehearsal

## Weekly Events

### Piecemakers Quilting Group

Every Thursday at 9:00 am  
Fellowship Hall

You are invited to come and get connected with this fun group. There is sewing, quilting, and cutting along with fellowship and devotions. No experience is necessary!

### M.E.N.S (Men Exploring and Navigating Spiritually) Study

Every Friday morning at 6:00 am  
Koinonia Kafe

Come and enjoy Christian relationships. If you would like to join this early morning group for faith-filled discussion, contact Jim Bishop via the office.

### Monday Noon Bible Study

Come explore what it means to be Lutheran.  
Every Monday at Noon— Reformation Room

### Men's Bible Study at Hardees

Every Wednesday morning at 7:30 am  
Hardees on Haines Ave. by Applebees

### Adult Choir Rehearsal

Weekly on Wednesdays at 7:10 pm  
Sanctuary

### Children's Choir Rehearsal

Weekly on Fridays at 3:30 pm  
Sanctuary





### The Alleluia Ringers

Weekly on Tuesdays at 6:30 pm  
Sanctuary Loft

This wonderful group of hand bell ringers practice weekly and ring in worship whenever they feel ready

## How to Get Connected

### Social Media:

- 
[facebook.com/southcanyonlutheran](https://facebook.com/southcanyonlutheran)
- 
[twitter.com/southcanyonlutheran](https://twitter.com/southcanyonlutheran)
- 
[Instagram.com/southcanyonlutheran](https://instagram.com/southcanyonlutheran)
- 
<https://onrealm.org/SouthCanyonLuth>

### Get Text & Email Alerts:

Call the church office to get set up with our app-based platform so you can receive text. Let us know if you have an email where you would like to receive newsletters and other information.

### Download our Realm App:

We have a wonderful app for downloading. Call the church office to learn how!



### Call or Email our Main Office:

Main Office: 605.343.4887  
[info@sclc-rc.org](mailto:info@sclc-rc.org)

Or go to our website: [sclc-rc.org](https://sclc-rc.org) and click on box to join us online.

## Services Online

We are live on Sundays at 9:00 am here:

-  South Canyon Lutheran YouTube
-  [Facebook.com/southcanyonlutheran](https://facebook.com/southcanyonlutheran)

### NEED TO CATCH UP?

Catch all the livestream and videos on our website or on YouTube at any time. Services are archived for viewing.



PASTOR CHRIS BAESLER

*Senior Pastor*

Dear Brothers and Sisters in Christ, May God bless you in this new year.

Ephesians 4:11-16, says:

*"The gifts he gave were that some would be apostles, some prophets, some evangelists, some pastors and teachers, to equip the saints for the work of ministry, for building up the body of Christ...."*

I have always found this passage to be full of deep promise and purpose for our lives. Pastor Erik, thank you for sharing your gifts with us, equipping us for the work of ministry. I am grateful to have served with you and to call you not only a colleague but a friend. I look forward to what Holy Spirit will continue to do through you as you move to your new call.

Remember we will be saying goodbye to Pastor Erik on Sunday, January 8th during worship as well as during a special time of fellowship following the service.

As we begin a new trail in our journey, I am celebrating God's promise that we each have a work of *ministry* to be used to build up the body of Christ. Part of that promise is to remember that we live by grace and sometimes need to be the ones sustained by our faith community as we grieve or gather our strength. This is a healthy thing to acknowledge amidst the call to ministry that can seem like a burden. I say this as a way of inviting you to discern what work God is calling you to do within the community of SCLC in this present time. This is always important, but even more so now as we spend time in discernment regarding pastoral needs, other staffing and ministry needs. Please see the **Ministry Needs--Building up the Body** section in the Newsletter for ministry that need your participation.

Going forward, church leadership will provide regular updates on a potential **call process**. Church council leaders will begin the process by meeting with Pastor Jonathan Steiner, from the Synod Office to get us started in a FaithX study. Faith X provides demographic information relevant to our immediate neighborhood and the wider Rapid City area so that we can better understand the people we are being called to serve. The next step, which will begin simultaneously, will be a congregational-wide Vitality Survey. The Vitality Survey is an online resource that will help you provide information about our passions, ministry needs, and ministry potential as a congregation. This type of information is another way of asking where the Holy Spirit is already present and active. You will be invited to take part in this online survey in the days ahead. If online doesn't work for you, a paper resource will be provided.

It truly has been a blessing to be in ministry together and I am hopeful in the Holy Spirit's continued work among us and through us into the new year.

Peace in Christ,

Pastor Chris

### LENTEN DRAMA

For Lent this year, as part of worship, we plan on presenting a dramatic interpretation of the trial and crucifixion of Jesus' life. There is a need for actresses/actors to play the parts as well as for behind the scenes work (e.g. costumes, lighting, sound). Different roles have different levels of commitment—small and large parts are available. If you would be interested in knowing more about participating please text/call Diane Tschetter at (605) 390-1167 or email [bdtschet@gmail.com](mailto:bdtschet@gmail.com). Lenten Drama will start on Wednesday March 1st and go through Wednesday the 29th.



## PASTOR ERIK THONE

*Associate Pastor*

To all the saints in Christ Jesus who are at South Canyon Lutheran Church,

*Grace to you and peace from God our Father and the Lord Jesus Christ (Philippians 1:1-2).* This is how Paul begins his letter to the church in Philippi. Not all Paul's letters are "love letters." His letters to the Corinthians, for example, are marked by more conflict than celebration. Philippians, however, is full of joy, gratitude, and encouragement. So I begin as Paul did with the Philippians because I share his feelings when I think of you.

A pastor's first call is always special. You have taught me what it *means* to be a pastor and, further, helped me to discover who *I am* as a pastor. Recently, someone asked me what I'd learned in my time at SCLC; I have a long list but most important is this development of my pastoral identity. All the theoretical knowledge in the world cannot replicate the actual experience of serving a congregation. Undoubtedly, I still have more to learn, but the foundation for all of my future pastoral ministry will forever have been laid at South Canyon Lutheran Church in Rapid City, SD. You will, forever, be the first place I preached an Easter sermon (to an empty sanctuary), presided over Holy Communion, and officiated a funeral. The past 3 years have not been what any of us imagined, but I thank you for the grace and care you've offered me throughout.

I do not know what the future holds for South Canyon, but I have great hope for you dear people. I see both dying and signs of new life. Change is happening and, undoubtedly, my departure will instigate further changes. Change involves death and death is certainly to be grieved. The pain of loss is real and not to be ignored, but, as Paul says: "We do not grieve as those who have no hope" (1 Thessalonians 4:13); resurrection is not merely hope for the dead but the way God works in the world: we experience death in many ways but, out of death, God raises up new life. This is most certainly true. My prayer for you is that God strengthens you in faith in order that you may face such change (and the death within it) with courage and enduring hope in the resurrection. I have seen your faith and "I am confident of this, that the one who began a good work among you will bring it to completion....For it is God who is at work in you, enabling you both to will and to work for God's good pleasure" (Philippians 1:6, 2:13).

Once again, my words feel inadequate to express all my feelings. I hope, however, that they sufficiently convey that I leave South Canyon filled with love for you. I hope, in my time here, I have, likewise, gained some of your affection and that I may go forward with your blessing and prayers. I thank you for the kind words that so many of you have already offered me over the past few weeks. Your affirmation means so much as I gaze into the uncertain future with both excitement and trepidation.

I could, undoubtedly, fill many additional pages with further thoughts and feelings (I've never been a man of few words), but let me conclude by, once again, following Paul's example and ending with a blessing: "May the grace of our Lord Jesus Christ be with your spirit: you are enough, accepted, and loved now and forever, no matter what. Amen."

Pastor Erik



# FAITH FORMATION

## Sundays

### January 1st

Worship 9:00 am

### January 8th

Worship 9:00 am with Communion

Pastor Erik's Farewell Brunch

### January 15th

Worship: 9:00 am

Church School: 10:00—10:30 am

Confirmation Meeting 5:00-7:00 pm

### January 22nd

Worship 9:00 am with Communion

Church School 10:00-10:30 am

### January 29th

Worship 9:00 am with Communion

Family Service Project 10:00 am

Cold Weather Blessing Bags—For Parent Brunch,  
Church School and Elementary-age families



## Wednesday Nights

*Join us Wednesday evenings for a meal (4:45-6:00), Worship Service (6:00-6:40), and  
Faith Formation: 4 yrs—5th grade (6:45-7:15); Middle School & High School (6:45-7:20)*

### January 4th—

**NO Programming - New Year's Break**

### January 11th—Tator Tot Casserole

Meal 4:45-6:00 pm

Worship 6:00-6:40 pm

Faith Formation 6:45-7:15 pm

Peer Groups 4 yrs - 5th grade

Middle School & High School

### January 18th—Chili, Soup, and Cinnamon Rolls

Meal 4:45-6:00 pm

Worship 6:00-6:40 pm

Faith Formation 6:45-7:15 pm

Peer Groups 4 yrs - 5th grade

Middle School & High School

### January 25th—Asian Night

Meal 4:45-6:00 pm

Worship 6:00-6:40 pm

Faith Formation 6:45-7:15 pm

Peer Groups 4 yrs - 5th grade

Middle School & High School

# MOMENTS TO CELEBRATE

## LOOKING BACK AT 2022

Our Family Fall Festival was a great success! Thank you to the families who helped plan and carry out this new fun event. Thank you to those who attended and volunteered. The Egg Roulette raised \$51.00 for the Humane Society.

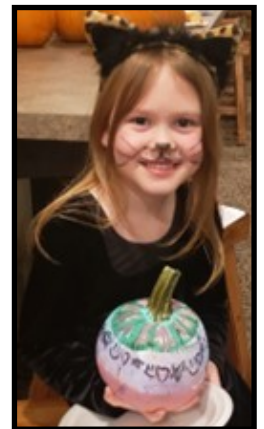




# MOMENTS TO CELEBRATE

## Campfire and Costumes Night

On Wednesday night, we enjoyed time together around a campfire, painted pumpkins, and enjoyed hot cider and donuts!



## Free Lunch





# MOMENTS TO CELEBRATE



## CHRISTMAS PAGEANT



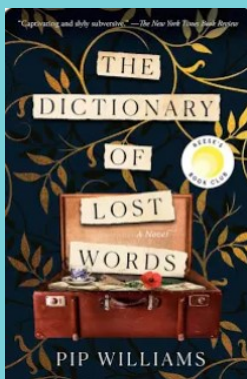


# WHAT'S HAPPENING

## FREE LUNCH

"Imagine inviting 1500 of your closest neighbors over for lunch. That's exactly what South Canyon Lutheran Church has done for almost 20 years." This statement appeared recently in an article written for the Raider Generation, the Stevens High School newspaper. Started in 2003 by Deanna Darr, our congregation has embraced this ministry in an effort to let students know the church is a safe place and all are welcome here. Up next is **Free Lunch for finals** Wednesday and Thursday, January 18th and 19th. The challenge this time is that there's only one lunch period (from 11:30-12:30) instead of two, and freshmen can leave campus too. Averaging over 200 students during the last three months, this becomes an exciting opportunity to serve perhaps 300 students at the same time for two days. Would you like to help prep food, serve and clean up, or bake cookies, bars, or brownies? If so, please add your name to the list at the information counter, or email [bdtschet@gmail.com](mailto:bdtschet@gmail.com). We are blessed to be a blessing! Thank you for your generous hearts.

Diane Tschetter



## BOOK CLUB

The Dictionary of Lost Words, by Pip Williams  
Saturday, January 21st, 8:30 am



BEER & HYMNS  
with "Wake Up Eutychus!"

JAN 8 at 5:00 PM

AT ZYMURCRACY BEER CO.  
4624 CREEK DRIVE, SUITE 6  
RAPID CITY





# WHAT'S HAPPENING

## THE CALL PROCESS

In the future, Call Process updates will be provided in this space.

## ADVENTURE TRIP

Pastor Chris is attempting to put together an Adult Adventure Trip to the Boundary Waters of Minnesota. Currently this is a flexible and tentative idea in the exploratory phase. Possible dates will be sometime in the beginning of June. If you would be interested in learning more about what this experience might look like, email Pastor Chris at [pastorchris@sclc-rc.org](mailto:pastorchris@sclc-rc.org). or----an informational meeting will be held after worship on Sunday, January 29th at 10:00 am.



Like to clean?  
We need a  
custodian.  
Please call the  
church office.



Happy New Year  
from the staff!

## WOMEN'S BIBLE STUDIES

### ELIZABETH CIRCLE

9:00 am on the 1st Tuesday  
Koinonia Kafe

### WESTHILLS RUTH CIRCLE

1:30 pm on the 3rd Tuesday  
Westhills Village

### EUNICE CIRCLE

1:30 pm on the 3rd Tuesday  
Koinonia Kafe

### PRISCILLA CIRCLE

7:00 pm on the 3rd Tuesday  
Koinonia Kafe

## MEN'S BIBLE STUDIES

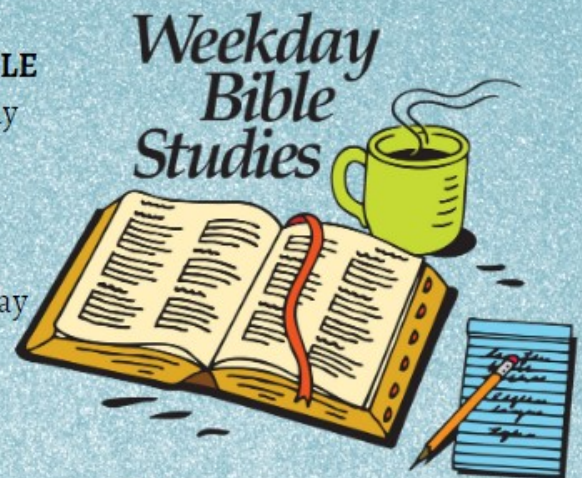
### M.E.N.'S

(Men Exploring and Navigating Spiritually)

6:00 am Fridays - weekly  
Koinonia Kafe

### Men's Bible Study at Hardees

7:30 am Wednesdays- weekly  
Hardees on Haines Ave. by Applebees



## BIBLE STUDY WITH PASTOR CHRIS

Noon on Mondays - weekly  
Reformation Room



# Church Business

## Financials as of November 2022:

Actual Contributions for month.....	\$45591.91
Actual Expenses for month .....	\$ <u>62,724.90</u>
<b>Net:</b> .....	<b>\$-17,132.99</b>
YTD Contributions .....	\$572,536.19
YTD Actual Expenses.....	\$580,393.27
<b>YTD Net:</b> .....	<b>\$ -7,857.08</b>
<b>Total Budgeted Expenses for 2022.....</b>	<b>\$898,433.00</b>

## Skip the Tax!

If you're over 72, there is a way to take your required minimum distribution, skip the tax and make a meaningful gift to support our ministries at South Canyon Lutheran Church - the IRA Charitable Rollover. This strategy will also reduce your taxable income without the need to itemize deductions. (Everyone over age 70 1/2 is eligible to make a tax-free gift from an IRA, even if you're not yet receiving RMDs.) Contact your financial advisor for more information. If you do not have an advisor, you can contact Kathy McHenry, Director of Lutheran Planned Generosity of South Dakota, for information about this and more tax-efficient ideas.

Phone: 605.274.5030 Website: [www.lpgsd.org](http://www.lpgsd.org)

Email: [kmchenry@sdsynod.org](mailto:kmchenry@sdsynod.org)

## thrivent Action Teams

Are you a  
Thrivent  
member?

Would you be willing to sponsor an event or project at SCLC (such as Free Lunch)? It is very simple and we will help you with the application process. When you sponsor a project or event, SCLC gets up to \$250 to help with the cost, whether it is put towards a fundraising purchase or for a project item. This is such an easy way to help support our church and the ministry efforts here at South Canyon. Call Kristi in the church office for more information.

## Prayers



## Let SCLC pray for you!

Please also let us know if there is a death, a birth, if someone becomes homebound, hospitalized, or any cause for sorrow *OR JOY*. We truly care for you and your family!



## Thank You!



"To See, Grow, and Serve to the Glory of God."

Your regular donations and generous gifts have been noticed and we THANK YOU. The spirit of stewardship, the sharing of your time, talents, and treasures is alive at South Canyon. Through your support and help with various ministries and programs, we ARE South Canyon Lutheran Church, living out our mission statement



**Linda Black**  
linda@sclc-rc.org

## Pastoral Care



### Caring for Our Members

South Canyon Lutheran Church has many members in Care facilities and shut ins. They appreciate visits from other church members. If you would like to visit one of these members once a month, and perhaps serve them communion, please let Linda Black know. You may do a visit on your own or with another person. This is a wonderful way to share God's love with those who gave so much to South Canyon Lutheran Church in years past.



### Soup Sisters

Soup Sisters will gather in the kitchen at 6:30 pm on Thursday, January 12, to make soup. If you would like to be added to this list for notices please contact Linda Black.

### Caregiver Lunch

The next Caregiver Lunch will be Friday, January 20, at noon in the Fellowship Hall. Please RSVP to Linda Black.



### Prayer Shawl Ministry

Prayer shawls are a wonderful gift to someone who might be in the need of feeling a warm hug of love. Yarn is available in the church office with patterns for knitting or crochet. If you know of someone who might be in need of a prayer shawl they are available at church.



# Social Ministry Opportunities

## January Ministry of the Month

## Church Response

### Woyatan Lutheran Church

We will serve the meal and worship with their members on Sunday, January 8th. Meet at Woyatan at 11:00 am.



SCLC supports *Passages women's ministries*. Donate toothpaste, tooth brushes, chap-stick, gloves, coffee cups with scripture readings, Christian key chains and/or devotionals. Drop items off in Giving Center area. Thank you for making a difference.

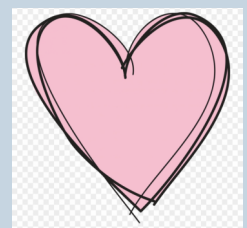


Church Response collects and distributes food, diapers, feminine products, and household goods that are not covered by the SNAP program. They are seeing an increase in need and new sign ups for help with food. Food in our grocery cart and

items in the *Giving Center* (church entry) are taken to Church Response every month. The grocery cards that we sell in the office help to fund this ministry as well.



The giving center baskets are located in the entryway. The items are collected year round and are given to a variety of locations in the community. The list of items needed is printed near the baskets.



# From the Office



Kristi Wellendorf  
kristi@sclc-rc.org  
605.343.4887



Sarah Storm  
sarah@sclc-rc.org  
605.343.4887



Sheila Hoyer  
sheila@sclc-rc.org  
605.343.4887

## Helpers needed for Saturday and Sunday Worship Services:

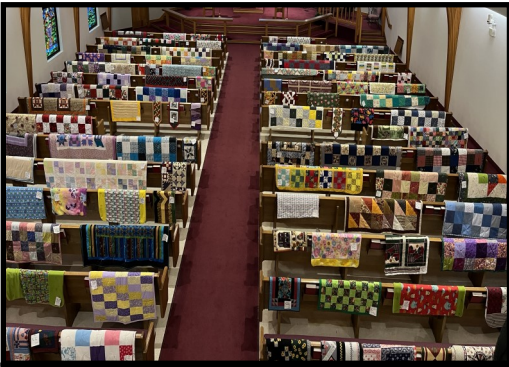
- Assisting ministers
- Readers
- Ushers
- Communion servers
- Technology operators for online services

*Sign-up forms are in back of the Sanctuary*

We also need people to help make coffee and clean up fellowship food on Saturday evenings.

If you see a need - step in  
otherwise

**Training will be provided!**



## SOUTH CANYON LUTHERAN CHURCH PIECEMAKERS

Our Piecemakers have an amazing ministry! Since their beginning in 2000, they have raised \$76,000 which they donate to more than 36 charities. The quilts they have made, if spread end-to-end, would reach 10.6 miles in length.



## WE'RE GETTING CLOSE!

Do your holiday shopping at Family Fare and Family Dollar to benefit the church!

Save your shopping receipts from Family Fare and Family Dollar - bring them to church and drop them off in the basket in the entryway.

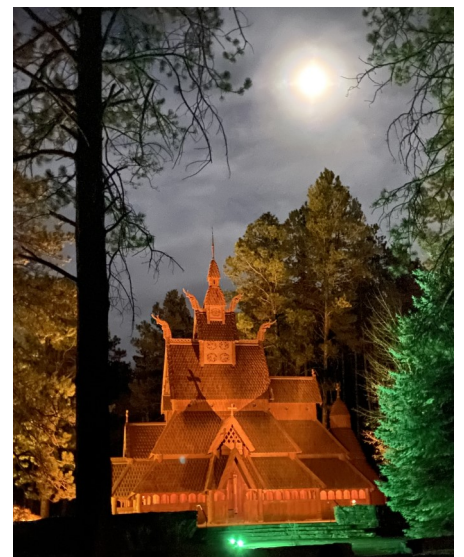
Once we collect \$150,000 in receipts, we receive \$1,000 in return.



## Grocery Gift Cards

Grocery gift cards are available in the church office.

Cards can be purchased at: Family Fare, Safeway, Sam's, and Walmart. These local stores give back 3% - 5% to Church Response and 2% to SCLC. It all adds up and takes such little effort. Won't you consider trying this the next time you plan to do your grocery shopping? Grocery gift cards can be purchased in the church office or at the Information Center on Sundays.



# Director of Worship



Ellen Shirley  
ellen@sclc-rc.org

Happy New Year! It's a very good time to make a New Year's resolution – like joining the Kid's Choir or Wednesday Worship Band or Sanctuary Choir or Bell Choir or Joyful Noise. We are always excited to add new faces to each of these groups. Rehearsals resume the week of January 9th. And, as always, if you have any questions, just let me know. Ellen

Bell Choir – Tuesdays at 6:30 – 7:30 p.m. in the Sanctuary Balcony

Wednesday Worship Band – Wednesdays at 5:45 – 6:00 p.m. in the Sanctuary

Joyful Noise – This group's schedule is tricky, but we will rehearse January 11th and 18th (after worship [6:40 – 7:10] in the sanctuary) to lead worship January 21st and 22nd

Sanctuary Choir - Wednesdays at 7:10 – 8:15 p.m. in the Sanctuary Balcony

Kid's Choir – Friday afternoons from 3:30 – 4:10 p.m. in the Sanctuary

## MINISTRY NEEDS: ***BUILDING UP THE BODY***

Our church is in need of leaders for our middle school and high school ministry who can work with Michelle and Pastor Chris to build up our young people and fill the gap that will be left by Pastor Erik's absence. If you are willing, contact Pastor Chris—even if you are only able to lead sometimes. We will work with you to make sure you are equipped and prepared—activities/programming will be provided for you.

Looking ahead, leadership has discerned that Children, Youth, and Family is too large of a job for one person to provide focus, so we will make adjustments to staffing in the future; while hiring a youth position is an option, until we complete the discernment process for pastoral staff, we don't think we can take that step. Watch for more information in future Newsletters.

Our church is in need of people who are willing to invest time and energy in Worship ministry: **assisting ministers, readers, ushers, communion servers, technology (slides, livestream, and soundboard operators)**. All are needed for a Sunday morning service. Training/equipping for this ministry will be provided. Watch for opportunities in the new year to sign up for these ministries. You can call the office to sign up.

While it is always nice to be asked, in this new time, your church needs you to make your willingness to serve in particular areas known.



# Children, Youth & Family



January 15 & January 22  
January 29 - Family Service Project  
Cold Weather Blessing Bags

We will pack Cold weather blessing bags for guests who visit Cornerstone Rescue Mission. Families please bring donations such as lip balm, small lotions, tissues, granola bars, ponchos, foot and hand warmers, gift cards for a local coffee shop or restaurant for shelter from the cold, hard candy or anything you would like to add. We will assemble 30 bags or more depending on donations. Meet in Fellowship Hall following worship

## January 29- Family Service project: Cold Weather Blessing bags

For Parent Brunch, Church School & Elementary age families

We will pack Cold weather blessing bags for guests who visit Cornerstone Rescue Mission. Families please bring donations such as lip balm, small lotions, tissues, granola bars, ponchos, foot and hand warmers, gift cards for a local coffee shop or restaurant for shelter from the cold, hard candy or anything you would like to add. We will assemble 30 bags or more depending on donations. Meet in Fellowship Hall following worship.

All are welcome to donate to this project.



## MIDDLE SCHOOL NIGHT LOCK-IN

Friday, January 20th 6:00pm  
to Saturday 9:00 am

Adult/Parent chaperones are  
needed to make this night a  
success!

**Friends are  
Welcome**

Registration Required  
and due by January  
18th



Paper Registration Forms at  
Church

## HIGH SCHOOL STUDENTS: Free Lunch Finals @



South Canyon  
Lutheran Church

January 18th - Chili, Soup  
and Cinnamon rolls  
January 19th - Mac &  
Cheese and Brats



Freshman welcome  
11:30-12:30

God's story is our story. We introduce our children and youth to Jesus so they can grow in knowing and trusting Him over **time**. Along the way, we are here to help and to grow and find our own way as well. Let peace, hope, joy, and love lead us into this new year.



Michelle Baesler  
michelle@sccl-rc.org  
605.343.4887

## January

- 4 No Meal or Programming
- 8 Parent Brunch and Church School families, Join us for Pastor Erik's Farewell Brunch
- 11 Wednesday Nights Resume—Peer groups/Youth group
- 15 Church School 10:00; Confirmation meeting 5:00-7:00
- 18 Free Lunch Finals 11:30-12:30, Wednesday Nights—Peer groups/Youth group,
- 19 Free lunch Finals 11:30-12:30
- 20 Middle School Night Lock-In 6:00pm—9:00 am on the 21st
- 22 Church School 10:00
- 25 Wednesday Nights Peer Groups/Youth group
- 28 Confirmation during worship
- 29 Family Service Project after worship

## HIGH SCHOOL NIGHT COMING SOON!

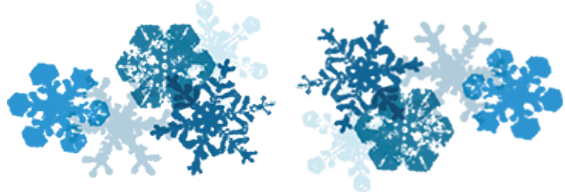
**WE ARE LOOKING FOR A CARING ADULT TO MEET WITH OUR  
HIGH SCHOOL YOUTH ON WEDNESDAY NIGHTS!**



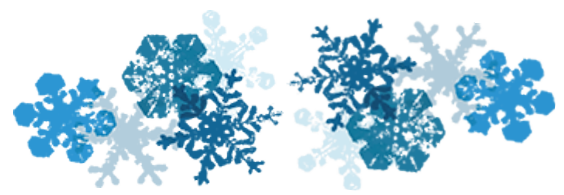
Middle School & High School youth created the Nativity Scene out of SPAM and marshmallows. It was smelly.....a lot like the stable must have been the 1st Christmas.







# JANUARY



Sunday	Monday	Tuesday	Wednesday	Thursday	Friday	Saturday
1	2 Office closed	3 9am Elizabeth Circle	4 7:30am Men's Bible study  No Wednesday Night programming	5 9am Piecemakers	6 6am MENS Bible Study	7  5:30pm Worship with communion
8 9am Worship with communion 10am Pastor Erik's Farewell Brunch 11am Woyaton  5pm Beer & Hymns at Zymurcracy Beer Co.	9  12pm Bible Study with Pastor Chris	10  6:30 Bell Choir	11 7:30am Men's Bible study 4:45pm Meal 5:45pm Worship Band 6pm Worship 6:40pm Jpyful Noise 6:45pm Faith Formation 7:10pm Sanctuary Choir	12  9am Piecemakers  6:30pm Soup Sisters	13  6am MENS Bible Study 3:30pm Kid's Choir	14  5:30pm Worship
15  9am Worship  10am Church School  5pm Confirmation Meeting	16  12pm Bible Study with Pastor Chris	17 1:30pm Eunice Circle 1:30 pm Westhills Ruth Circle  7pm Priscilla Circle  6:30pm Bell Choir	18 7:30am Men's Bible study 11:30am <b>Free Lunch</b> 4:45pm Meal 5:45pm Worship Band 6pm Worship 6:40pm Jpyful Noise 6:45pm Faith Formation 7:10pm Sanctuary Choir	19  9am Piecemakers  11:30am <b>Free Lunch</b>	20 6am MENS Bible Study 12pm Caregivers Lunch  6:00 Middle School Lock-In	21  8:30am Book Club  5:30pm Worship with communion
22 9am Worship with communion  10am Church School	23	24  6:30pm Bell Choir	25 7:30am Men's Bible study 4:45pm Meal 5:45pm Worship Band 6pm Worship 6:40pm Jpyful Noise 6:45pm Faith Formation 7:10pm Sanctuary Choir	26  9am Piecemakers	27 6am MENS Bible Study	28  5:30pm Worship with Confirmation & Affirmation of Baptism
29 9am Worship with communion 10am Family Service Project for Parent Brunch, Church School and Elementary Families, Cold Care Blessing Bags, Adult Adventure Trip meeting	30  12pm Bible Study with Pastor Chris	31  6:30 Bell choir				



## South Canyon Lutheran Church

700 44th Street,  
Rapid City, SD 57702

Phone: 605-343-4887  
Website: [www.sclc-rc.org](http://www.sclc-rc.org)

***Return Service Requested***

Non-Profit Org.  
U.S. Postage  
Paid  
Rapid City, SD  
Permit No. 267

## January 2023 SCLC Canyon Parish News

### South Canyon Lutheran Church

700 44th St.  
Rapid City, SD 57702  
605-343-4887  
[info@sclc-rc.org](mailto:info@sclc-rc.org)  
The office is open  
Monday-Thursday,  
9 am to 4 pm  
Fridays 9 am to Noon



**Chris Baesler**, Senior Pastor

**Erik Thone**, Associate Pastor

**Linda Black**, Director of Pastoral Care

**Kristi Wellendorf**, Office Manager

**Michelle Baesler**, Director of Children,  
Youth and Family

**Linda Jensen**, Kitchen Coordinator

**Ellen Shirley**, Director of Worship &  
Music

**Sheila Hoyer**, Administrative Assistant

**Sarah Storm**, Worship Coordinator

## CONTACT information



**Marsha Mertes**, Pianist

**Mary Weidenbach**, Choir Accompanist

**Lori Brey**, Nursery Attendant

**Mark Meier**, Custodian

**Ken Weybright**, Computer Consultant

**Andrea Wager**, Bookkeeper

### Friend-Ship Preschool

Phone: 605-343-4887  
Fax: 605-355-0435  
[info@sclc-rc.org](mailto:info@sclc-rc.org)

**Preschool 3's** - 8:45 am to 11:15 am

**Pre-Kindergarten 3 day:**  
M, W, F - 8:45 am to 12 pm

**Pre-Kindergarten 5 day:**  
M-F - 8:45 am to 12 pm

### Friend-Ship Preschool Staff

**Rana Holland**, Preschool Director  
**Julie Kokesh**, Preschool Teacher  
**Laura Mason**, Preschool Teacher  
**Lindsey Wellendorf**, Preschool Teacher

### Church School

January 15 & 22  
10:00 am

### Wednesday Nights

*Meal* - 4:45 pm

*Family Worship* - 6:00 pm

*Faith Formation* - 6:45

### Mission of the Month: Church Response

